

# SHELL MYSELLA S3 N – DESIGNED TO PROTECT YOUR GAS ENGINE



Shell **Myselfa**  
Shell Marine Products

The Shell Myselfa range of gas-engine oils has been developed to enable equipment operators to select the oil that will deliver optimum value to their operations through

- wear protection
- long oil life
- system efficiency.



## PERFORMANCE AT A GLANCE

	Protection	Oil life	System efficiency
<b>Shell Myselfa S3 N</b> ■ Reliable protection ■ Low ash content for four-stroke engines	✓✓✓	✓✓✓	✓✓✓

Performance level is a relative indication only.

## A LOW-ASH STATIONARY-GAS-ENGINE OIL

Shell Myselfa S3 N is a long-established and well-proven product. It is used extensively in all types of four-stroke engines burning natural and sour gas, in dual-fuel (diesel-pilot-fuel) engines and in gas compressor sets. It carries a wide range of approvals from engine manufacturers, has good oil life and is trusted by customers all over the world. It helps to keep the engine clean and provides excellent valve and spark-plug protection.

### Key data

SAE: 30, 40; BN: 5.0; ash: 0.45%

## DESIGNED FOR LONG OIL LIFE

The longer the oil life, the less fluid maintenance is required to help your equipment to operate for longer periods without interruption.

Shell Myselfa S3 N is designed to have good oil life characteristics in high-speed four-stroke engines. In medium-speed four-stroke engines, its oil-drain interval can exceed 10,000 running hours.

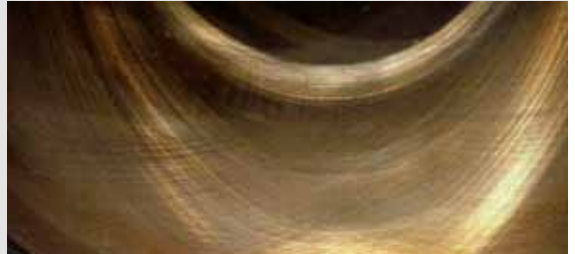


## DESIGNED TO PROTECT

Shell Mysella S3 N provides excellent valve seat protection and can thereby help to extend cylinder-head overhaul intervals. It also offers good combustion-chamber deposit control, as it produces low levels of ash of a favourable composition. It helps to keep ring grooves clean, which contributes to longer component life, and can be used in installations equipped with an exhaust gas catalyst.

## DESIGNED FOR HIGH EFFICIENCY

Shell Mysella S3 N is designed for excellent deposit control, which helps to prevent knocking and can unlock high levels of engine efficiency and availability. It is also available in SAE30 grade for reduced friction and higher fuel efficiency.



**LONG RING AND LINER LIFE:** Shell Mysella S3 N demonstrated excellent ring groove cleanliness (top) and left the cylinder liner in an excellent condition (bottom) in a Wärtsilä 20V34SG engine after 16,000 hours of operation without an oil change.

## SPECIFICATIONS AND APPROVALS

Shell Mysella S3 N meets the requirements of a wide range of equipment manufacturers. SAE viscosity grades available: 30, 40.

APPROVALS	MEETS REQUIREMENTS
GE-Jenbacher	Caterpillar stationary gas engines
MAK	Waukesha
MAN	
MDE Dezentrale Energiesysteme	
MTU	
MWM	
Nuovo Pignone	
Perkins	
Rolls-Royce	
Wärtsilä	

**SHELL MYSELLA S3 N OFFERS GOOD COMBUSTION-CHAMBER DEPOSIT CONTROL, AS IT PRODUCES LOW LEVELS OF ASH.**

## REAL-WORLD VALUE DELIVERY

Shell Mysella S3 N is a well-established, low ash gas-engine oil from Shell. It has a wide range of approvals from engine manufacturers and has been used successfully throughout the world.

## APPLICATIONS

- Ideal for use in four-stroke gas engines used for power generation
- Suitable for use in four-stroke gas engines operating compressors

## EXTENSIVE PRODUCT AND SERVICE PORTFOLIO

Whatever your needs or application, Shell Marine Products can provide a wide range of oils and greases, including synthetic, high-performance products and additional services.

Shell Marine Products also provides the world-leading Shell Rapid Lubricants Analysis (RLA) oil condition monitoring service, which is designed to help improve your business performance.

**Contact your Shell Marine Products account manager to find out more or email to [smp-marketing@shell.com](mailto:smp-marketing@shell.com).**

